



x-perience  
the passion  
of cycling

FRÄNK SCHLECK

MONDORF-LES-BAINS, LUXEMBOURG

# SCHLECK GRAN FONDO

**85KM**

MEDIO FONDO

**155KM**

GRAN FONDO

**26 MAY 2018**

[www.schleckgranfondo.com](http://www.schleckgranfondo.com)



GRAN FONDO  
WORLD SERIES

MONDORF-LES-BAINS  
LUXEMBOURG



**LIVE YOUR  
UNEXPECTED  
LUXEMBOURG**

Whether you are a highly motivated sportsperson, or you are seeking pleasant countryside moments, Luxembourg's many cycle tracks and mountain bike trails will have something for you. In Luxembourg, some unexpected exhilarating moments await you.

[visitluxembourg.com](https://visitluxembourg.com)

**VISIT  
LUXEMBOURG**



**WELCOME**

### **Schleck Gran Fondo**

After the huge success of the "Schleck Gran Fondo" in 2017, our famous fellow citizen Fränk Schleck invites all bike fans and passionate cyclists to race him once again on his favourite training routes,

The track for the second edition of the "Gran Fondo" road race offers all the necessary features to make even the most fervent bike enthusiast elate in pleasure: 2.400 m of altitude and a total distance of 155 km will be testing the endurance of the participants.

The first "Gran Fondo" took place in Cesenatico in Italy, in 1970. Since then, the race has gained a worldwide reputation and is organised all over Europe (Italy, Spain, Portugal, Greece, Austria, France...). Under Fränk Schleck's commendable initiative, this prestigious mass sporting event has come to the Grand-Duchy of Luxembourg, and more particularly, it's starting and finishing point to Mondorf-les-Bains, Fränk's very own hometown and place of residence.

As the Mayor of this town, Mondorf-les-Bains, I would like to thank this remarkable athlete to have always remained loyal to his roots, getting our citizens, and everyone else, involved in new sporting adventures.

I hope that the "Schleck Gran Fondo" will receive a permanent place on the yearly event calendar of our commune, and I wish Fränk and the entire organising team, as well as all participants and viewers, a fantastic bike race to remember!



Lex **DELLES**

Deputy mayor of the town of Mondorf-les-Bains

### **Discover the wide variety of Luxembourg's landscapes by bicycle**

After a successful debut last year, the Schleck Gran Fondo race has already gained numerous supporters from around the world. As part of the International cyclist Union's Gran Fondo World Series, the competition takes cyclists on Fränk Schleck's favorite training routes in his home country. The growing number of participants in this prestigious race highlights Luxembourg's close ties to cycling and its diversified and challenging terrain.

The Schleck Gran Fondo is also the perfect occasion to explore Luxembourg and discover its many attractions, the countless cycling and hiking paths and the beautiful landscapes. The second Schleck Gran Fondo takes cyclists through the wine producing region of the Moselle, through the Mullerthal "Luxembourg's little Switzerland" and the region of the Gutland. With its diverse landscapes and meandering roads, the Grand Duchy is the ideal setting for this race. I hope that many participants and their entourage will take the opportunity to explore Luxembourg before or after the race.

I am convinced that the second Schleck Gran Fondo will build on the success of last year and I wish the spectators and the participants yet again an exciting and thrilling cycling event.



Francine **CLOSENER**

Secretary of State for the Economy





Gemeng Munneref

## 10 BONNES RAISONS DE VISITER MONDORF-LES-BAINS



1. **Véritable havre de paix** avec plus de **100 hectares de verdure** à travers bois, places publiques aménagées, parcs & jardins
2. **CASINO 2000**, véritable **créateur d'émotions en tout genre**, regroupant divertissements, jeux & gastronomie
3. **MONDORF Domaine Thermal**, unique centre de santé et de remise en forme au Grand-Duché
4. **Plus de 200 manifestations et événements** organisés chaque année
5. De nombreux **commerces** et **boutiques**
6. **Un patrimoine historique et culturel hors du commun** à découvrir
7. 8 circuits de **randonnées pédestres et cyclistes**
8. Des **attractions permanentes** pour toute la famille
9. 24 **restaurants** et 13 **hôtels**
10. **Proximité** et **facilité d'accès** avec Luxembourg-ville et les frontières française et allemande

[www.visitmondorf.lu](http://www.visitmondorf.lu)



# WELCOME

Just as in 2017, the year in which the Luxembourg Sport Cycle Federation celebrated their centenary, Martine and Frank Schleck, together with all the volunteers, are looking forward to hosting yet another thrilling cycling adventure for hundreds of cycle fans, passionate or professional, to test their own limits or ride for fun. Thanks to the experience of the first edition, this year will see little flaws improved so that once again, this popular road race on the streets of some of the most beautiful regions of our country, sets out to please its participants.

Seeing that year after year it becomes increasingly difficult to organise cycle races, or major touring rides for cycling enthusiasts, we have to congratulate their efforts to dare making such a huge event happen.

All participants will most certainly find the race to contain an abundance of elements that please their cycling senses, but knowing Fränk, I am sure that especially all climbers are going to have a particular appreciation for the route.

Once again, I wish to express my deepest wish for this mass cycling event to inspire new talents to join our clubs, and who knows, maybe even to inspire some of you to commit yourself to share your passion and knowledge with the professional athletes of tomorrow.

Let the Schleck Gran Fondo 2018 receive all the success that it truly merits and let all the participants live a beautiful day full of a thrilling experience, making new friends and showing how much sports can fulfill a true role of integration in our society.



Camille **DAHM**  
President of the FSCL

**miselerland**  
moselle luxembourgeoise°

## VISIT MOSELLE



Culture  
Culture



Nature  
Nature



Sport & leisure  
Sports & loisirs



Wine & terroir  
Vin & Terroir



Eat & sleep  
Logger & manger

# VISITMOSELLE

VISITMOSELLE.LU

**VISIT  
LUXEMBOURG**

### Gran Fondo: let's make it last!

The difficult thing about a new adventure is not the beginning but making it last. The first experience with the Gran Fondo in 2017 was a successful start. The road race allowed me personally to keep my passion alive, and also to share it with hundreds of other bike fans. Now, the goal is to establish it!

We are going to meet each other again in our favourite environment. You are coming to join us for the fun, to train together or simply to meet the challenge and arrive. We are going to offer you the perfect setting for this day. It's always a great pleasure for me to introduce you to my old training routes, on which I have spent many an hour preparing for the races.

The Luxembourg Moselle region is a perfect location to satisfy your appetite for a road race, to fire your passion for cycling, and marks an exceptional picturesque landscape of this country, in which you will find many passionate bike fans.

We have taken outmost care to prepare you a qualitatively high circuit on roads which are well maintained and accessible for all. As a father of two little girls, I make it my mission to organise a family-friendly event. For me, the most important part will be the fun for the sport and the safety for all!

While the adults are racing, the kids will be enjoying special attention at workshops, obstacle races and specific kid's programs that will bring them closer to the fun and joy of cycling.

Have fun, enjoy yourselves and give your all!

Fränk **SCHLECK**  
Schleck X-Perience







[www.elco.lu](http://www.elco.lu)



**Äre Spezialist fir Haustechnik a Service**

**Elco S.A.** 12, Zone Industrielle L-8287 Kehlen | B.P. 2143 L-1021  
Luxembourg | T(+352) 40 111-1 | F(+352) 40 111-499 | [elco@elco.lu](mailto:elco@elco.lu)



**UCI GRAN FONDO WORLD SERIES**

### UCI GRAN FONDO WORLD SERIES

One of the many benefits in taking part in the Schleck Gran Fondo is the opportunity to qualify for the UCI Gran Fondo World Championships. In 2018, this event will be held in Varese, Italy.

The Schleck Gran Fondo is one of the 21 events staged around the world in which you can qualify for the Championships. In order to qualify for this unique event, you must finish in the top 25% of your Age Category.

The men in categories H1,2,3,4,5,6, have to qualify on the long course of 155 km. All women categories as well as H7,8,9 have to qualify on the short course of 85 km.

Each participant finishing in the top 25% will receive a UCI medal. Should you qualify for your Age Category at the event, you can come and collect your UCI medal. The age group winners of the UCI Gran Fondo World Championships are awarded the UCI rainbow jersey.

Get more information about the UCI Gran Fondo World Series on their website  
[www.ucigranfondoworldseries.com](http://www.ucigranfondoworldseries.com)



Ensemble changeons la ville...

RÉSIDENCE  
**VERMOND**  
GARDEN HOUSE  
& TOWN HOUSE  
À MONDORF-LES-BAINS



[www.kuhn.lu](http://www.kuhn.lu)



**tracol immobilier S.A.**  
GROUPE GETRAL

[www.tracol-immo.lu](http://www.tracol-immo.lu)

### FRÄNK SCHLECK AS AN OPEN BOOK



You can order the book online [www.edition.lu](http://www.edition.lu)

A year and a half after retiring as an active athlete, Fränk Schleck talks openly about his career in a book co-written with the Luxemburger Wort journalist Christophe Nadin. Looking back on fourteen years of professional cycling, the boy from Mondorf-les-Bains discusses his origins, beginnings on the bicycle, the sacrifices he made and the passions he has, and looks back at the relationships with his brother Andy and his friends from the peloton. Fränk Schleck talks Tours de France, the classics, winning and suffering falls, and how to make it through difficult moments. A unique opportunity to trace his career in words and exclusive pictures.





## PROGRAM GUIDE

### FRIDAY 25 MAY 2018

- 03:00 p.m. Registration & Packet Pickup @ Townhall, Mondorf-les-Bains  
Gran Fondo Village opens  
Pump Track  
Kids Bike Park
- 06:45 p.m. Registration & Packet Pickup close
- 07:00 p.m. **Safety Briefing & Pasta Party @ CASINO 2000**, Mondorf-les-Bains  
Meet & Greet with Miguel Indurain and Fränk Schleck

### SATURDAY 26 MAY 2018

- 07:00 a.m. Registration & Packet Pickup @ Townhall, Mondorf-les-Bains  
Changing Rooms, Baggage drop off @ Centre Sportif, Mondorf-les-Bains
- 08:00 a.m. **Gran Fondo Village opens**
- 08:30 a.m. Registration closes
- 09:00 a.m. Line up Gran Fondo
- 09:30 a.m. **Start 155 km**
- 09:45 a.m. Line up Medio Fondo
- 10:00 a.m. **Start 85 km**  
Pump Track, Kids Bike Parc & Jump Castels
- 11:55 a.m. **Closing Feed Zone 1 @ Oberdonven**
- 12:15 p.m. Secure Bike Park @ Parking Space next to the Gran Fondo Village  
Massage opens @ Centre Sportif, Mondorf-les-Bains
- 01:30 p.m. **Closing Feed Zone 2 @ Beaufort**
- 03:30 p.m. Schleck Gran Fondo Ceremony & Presentations @ Gran Fondo Village  
Schleck Gran Fondo Raffle  
**Closing Feed Zone 3 @ Banzelt**
- 04:30 p.m. **After Race Party @ Gran Fondo Village**
- 05:30 p.m. Closing Finish line & Feed Zone 4 @ Mondorf-les-Bains  
Massage closes
- 06:30 p.m. Changing Rooms & Baggage drop off close

### FOLLOW THE EVENT

**SHARE YOUR EVENT PHOTOS** by using the hashtag **#schleckgf**

This is where all the fun stuff happens as well as important event updates! Make sure that you are a part of the Schleck Gran Fondo's conversation and follow the official event social media pages:



@SchleckGF



#schleckgf



/user/Schleck X-Perience



@SchleckGranFondo



## Engagée, pour vous.

Plus que des experts, une équipe qui innove et donne le meilleur d'elle-même pour vous accompagner durablement dans tous vos projets.

Avec 40 agences réparties à travers le pays, il y a toujours un Responsable de relation BIL proche de vous. Trouvez votre agence sur [www.bil.com](http://www.bil.com).

**Vous avant tout**

Retrouvez-nous sur



BANQUE  
INTERNATIONALE  
À LUXEMBOURG





## ARRIVING IN MONDORF-LES-BAINS

### The place to be: 1 pl. des Villes Jumelées, 5627 Mondorf-les-Bains

#### PARKING

Parking 1: CASINO 2000, Route de Remich or Rue Flammang  
 Parking 2: Domaine Thermal, Avenue des Bains  
 Parking 3: Stade John Grün, Route de Remich



#### GRAN FONDO VILLAGE

Enjoy a great variety of family activities, food and drink, DJ and of course a place to sit and rest. The two-day Event Expo, staged in the Gran Fondo Village, provides great entertainment for riders, their friends, family and supporters.

Next to the Podium and the Race start, the Gran Fondo Village will give all the enthusiasts the opportunity to discover the new highlights from sponsors, exhibitors and local businesses.



## THE RACE DAY IN PICTURES

Here is some advice and information that should help you to organize your race day.



#### Car Park

Take the highway A13 Exit No.12. Please, follow the car park signs and use one of our three car parks.



#### Village Arrival

The Gran Fondo Village will be open between 8 a.m and 8 p.m. Take your time and visit our partners' and the exhibitors' booths.



#### Bib Collection / Last Minute Registration

Collect your bib and the official Schleck Gran Fondo's riders bag in the town hall of Mondorf-les-Bains. (you will need your ID card).



#### Changing Rooms

Use the changing rooms to put on your cycling clothes and get ready for the race.



#### Secure Bag Storage

You can check in your bag at the baggage drop-off area @ the sports hall next to the Gran Fondo Village.



#### Race Start

→ Gran Fondo 09:30 a.m.  
 → Medio Fondo 10:00 a.m.



#### Secure Bike Park

Use the secure bike park after the race while you complete the steps below. The secure bike park is open from 12:15 p.m. til 10:00 p.m.



#### Changing Rooms & Shower

After picking up your bag at the baggage drop-off area @ the sports hall, you can use the changing rooms and showers just next door.



#### Free Massage

The therapists of the Domaine Thermal wait for you @ the sports hall from 12:15 p.m. until 06:00 p.m.



#### Ceremonies

Presentations will be conducted at the Gran Fondo Village on the main stage. The presentation ceremonies for the 85 km and the 155 km Schleck Gran Fondo age categories will start at 03:30 p.m.



#### After-Race Party with Live Concert

The After-Race Party is your well-deserved reward after all the climbs you faced during the Gran Fondo competition. Great music from a live concert will add a unique atmosphere to the end of a great sporty weekend!



## EVENT INFORMATION FROM A TO Z

### AFTER RACE PARTY

The After-Race Party is your well-deserved reward after all the climbs you faced during the Gran Fondo competition. Great music from a live concert will add a unique atmosphere to the end of a great sporty weekend!

### AID STATIONS

You will find an Ambulance in the Gran Fondo Village, and a first aid kit is available at every feed zone to provide minor assistance. Each race is followed by an ambulance to insure the safety of the riders during the race.

### BAGGAGE DROP-OFF

You can check in one bag at the baggage drop-off @ the sports hall next to the Gran Fondo Village.

### CHIP TIMING

While picking up your Bib number, you will have to pay a deposit of 15€ for the Chip. After the race, you will be refunded. The Chip has to be returned to the registration office in the Town hall.

### CUT-OFF TIMES

The finish line controls will close when the "Fin de Course" vehicle completes the course. This vehicle will travel at an average of 22 km/hr. All participants who are passed by the closing vehicle are considered out of the supervision of the race. Every rider who chooses to continue despite being passed will not be covered by the organization's liability, and the organization will hereupon decline all further responsibility.

### EMERGENCY PROCEDURE

Emergency phone number: **+352 23 60 55 - 800**. This number should only be used in case of a problem where the participant requires medical or safety assistance.

In case of the event of a serious incident dial 112 and use this checklist as a guide:

- Ensure your own safety first
- Ensure the safety and welfare of any injured person
- Contact the nearest course marshal or on course medical service personnel
- Remain at the scene until emergency assistance arrives and take note of how many kilometers into the course you are.

### FEED ZONES

#### GRAN FONDO 155 km

Oberdonven @ 41,1 km  
Beaufort @ 79,7 km  
Banzelt @ 125,3 km  
Mondorf-les-Bains @ Finishline

#### MEDIO FONDO 85 km

Oberdonven @ 41,1 km  
Banzelt @ 54,4 km  
Mondorf-les-Bains @ Finishline

### KIDS' CORNER

Let your kids enjoy a special action package for a fun day at the Gran Fondo! Bouncing castles, pump track, kids bike park... all the young contestants will be entertained and supervised by a group of professionals. The kids' corner will be open on Saturday from 10:00 a.m.

### MASSAGE

The therapists of the Domaine Thermal wait for you @ the sports hall from 12:15 p.m. until 06:00 p.m.

### MECHANICAL SUPPORT

Mavic provides bike mechanic services at the Gran Fondo Village for any last-minute mechanical help you may need. Riders are required to carry their own spares; however mechanical assistance is provided



## EVENT INFORMATION FROM A TO Z

on all the routes. Two cars for service purpose are available to the cyclists. One car will follow the head of the race, the second car the tail of the race.

### MEDALS

Every finisher of the Schleck Gran Fondo will receive the official Schleck Gran Fondo Medal at the Finish Line. Each participant finishing in the top 25% will receive a UCI medal. You can pick up your well-deserved medal at the Schleck Gran Fondo tent next to the central stage in the Gran Fondo Village.

### MERCHANDISE COLLECTION

You can buy the Schleck Gran Fondo cycling kit at our booth in the Gran Fondo Village. The stock is limited!

### PACKET PICKUP

Avoid the rush on the morning of the event to pick up your packet in the town hall of Mondorf-les-Bains.

### Opening hours:

Friday 25 May 2018 03:00 p.m. - 06:45 p.m. // Saturday 26 May 2018 07:00 a.m. - 08:30 a.m.

### PASTA PARTY

#### Join Fränk Schleck for the Pasta Party at the CASINO 2000!

Starting at 7:00 p.m. on Friday 25 May, the Pasta Party will make sure that you are fueled up and ready to tackle the road on Saturday. A live band will be playing to complete the perfect moment of this pre-race fun!

### AWARD CEREMONIES

Presentations will be conducted at the Gran Fondo Village on the main stage. The first presentation ceremonies for the 85 km and the 155 km Schleck Gran Fondo Age categories will start at 03:30 p.m. Presentations will then continue on a rolling schedule. Place getters will be displayed on the big screen, and will need to make themselves known to event staff.

Riders are required to be at the Stage area 15 minutes prior to the advised time, wearing cycling short & jersey.

### RESULTS

The results will be published @ the Schleck Gran Fondo booth next to the Central Stage in the Gran Fondo Village. They will also be available online.

### RIDER BAGS

All registered riders will also receive the official Schleck Gran Fondo Bag @ the packet pick up.

Your registration pack contains the following items:

Pasta Party Voucher • Printed Road Book • Bike sticker with profile info • Bib number & Bike plate • Water bottle • Nutrixion Energy Bar • Schleck X-Perience Towel • Cycling Cap • Buff

### RULES & REGULATIONS

All the participants of the Schleck Gran Fondo must be aware of all the Rules & Regulations which include timekeeping and rankings, time limits, equipment allowed, safety, medical and personal assistance and other important topics.

View the regulations in full: <https://www.schleckgranfondo.com/registration/>

### SAFETY BRIEFING

The Organizers of the Schleck Gran Fondo places a huge emphasis on safety. A safety briefing will be conducted on Friday 25 May at 7:00 pm during the Pasta Party at the CASINO 2000. Please try and be present for this important event.



# Émerveillez-vous ensemble

+ DE 200 CONCERTS  
ET ÉVÉNEMENTS PAR AN  
AU CASINO 2000

## CASINO 2000

*Mondorf-les-Bains, Luxembourg*

MACHINES À SOUS • FOOD AND MUSIC • BARS • BUFFETS À VOLONTÉ • SHOWS  
RESTAURANTS • SÉMINAIRES ET RÉCEPTIONS • ROULETTE • BLACK JACK • HÔTEL  
CASINO 2000 • L-5618 MONDORF-LES-BAINS • TÉL (+352) 23-6-11-1 • WWW.CASINO2000.LU



## RIDER'S EXTRA SERVICES

### BIKE RENTAL

France Bike Rentals is your trusted partner on the Schleck Gran Fondo, supplying the best in rental bikes and VIP-level race support. FBR provide a top-spec bike rental service during the event. Pickup your 2017 Madone 9.5 Dura-Ace, Emonda SLR 8 Dura-Ace or Domane SL7 Di2 directly at the Schleck Gran Fondo Village and return it at the end of the race. Rental bikes come with a complete checkup and new tires. All the packages include free delivery in Mondorf-les-Bains and pick-up at the end of the race. Free concierge service including bike settings.

Have a look at the offer <https://www.francebikerentals.com/Schleck-Gran-Fondo-2018>

Because, really, who actually wants to travel with their bike?



### COFFEE CORNER

For 'Il Magistrale' cycling and coffee is a way of life. The strong connection between riding a bike challenging the elements and drinking great coffee is evident.

Il Magistrale coffee is not just another coffee brand. The honorable title 'Il Magistrale' is reserved for those who push harder, suffer longer and keep on going to become a number one. The character, courage and panache showed by them inspires us to bring you the best coffee available.

Ride your bike, push hard and earn our coffees. BE MAGISTRALE and have free coffee on our booth in the Gran Fondo Village right before the start of your race!



### DRINK TO HYDRATE

Fill up your drink bottles at the Sources Rosport booth in the Gran Fondo Village.



### MASSAGE

Domaine Thermal and its team of 12 masseurs and physiotherapists are offering you detox, anti-stress and stretch massages at your arrival, allowing you rapidly to find back your leg flippancy and relieve your back tensions. The team is waiting for you from 12:15 pm to 05:30 pm @ centre sportif.



### SECURE BIKE PARK & BAGGAGE DROP-OFF

We offer you a secure baggage drop-off area and bike parking while you get your well-deserved massage and take part at the post-event celebrations in the Gran Fondo Village.





# WE LOVE CYCLING.



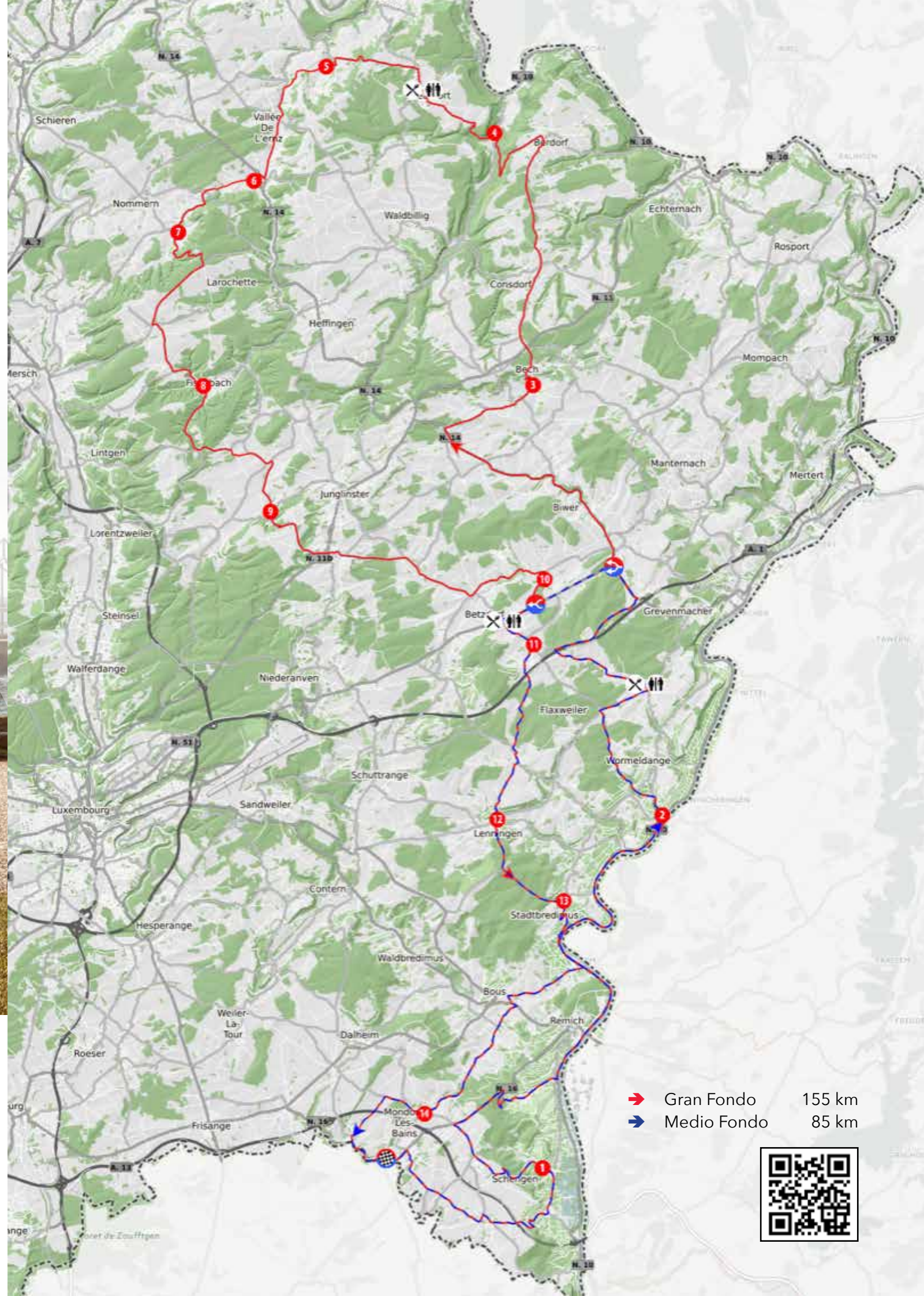
**ŠKODA**  
SIMPLY CLEVER



Consommation : 6,8 - 4,5 l/100 km | Emissions : 138 - 115 g CO<sub>2</sub>/km

En 1895, Laurin & Klement, les fondateurs de ŠKODA, ont débuté comme constructeur de vélos. Voilà pourquoi nous aimons tellement soutenir le cyclisme, du cyclotouriste au professionnel. Avec nos voitures particulièrement spacieuses et pratiques, nous sommes fiers de soutenir chaque cycliste ainsi que le Schleck Gran Fondo, le ŠKODA Tour de Luxembourg, le Tour de France, la Fédération du Sport Cycliste Luxembourgeois et nos coureurs talentueux grâce à notre programme cyclingtalents.lu.

[skoda.lu](https://skoda.lu)



➔ Gran Fondo 155 km  
➔ Medio Fondo 85 km

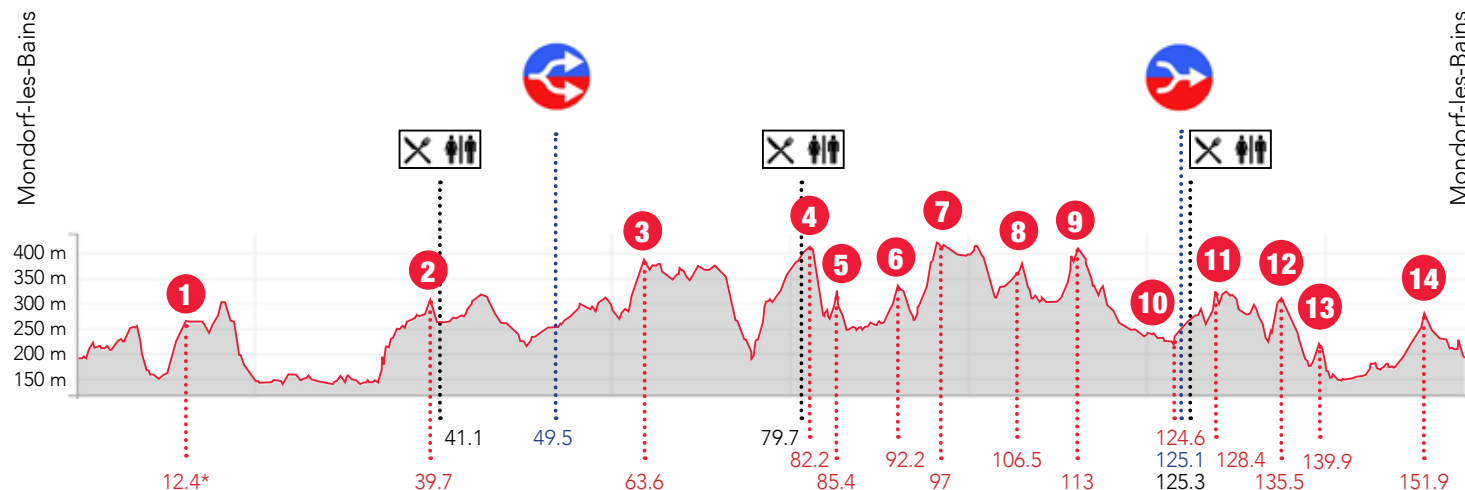






# GRAN FONDO 155 KM / 85 KM

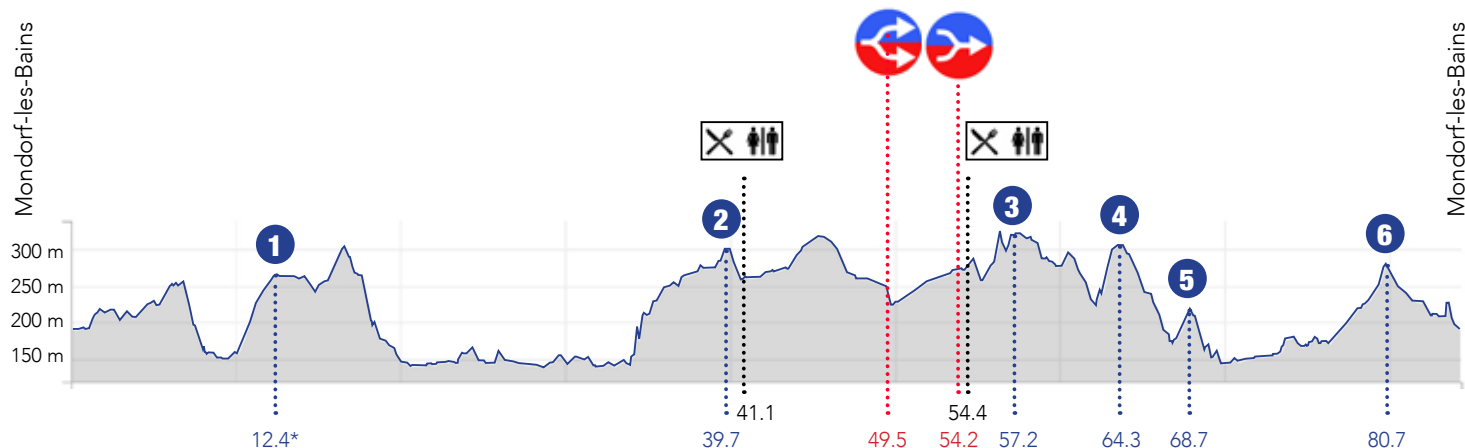
## GRAN FONDO 155 KM



		km Bottom	Lenght km	Avg. %
1	Wintrange	10,1	2,27	5
2	Wormeldange	34,2	5,53	2,80
3	Zittig	62	1,58	5,70
4	Beaufort	76	6,22	3,20
5	Eppeldorf	84,5	0,86	4,80
6	Renkebiert	90,5	1,65	4,70
7	Nommerlayen	94,2	2,76	5,10

		km Bottom	Lenght km	Avg. %
8	Fischbach	103,8	2,80	2,30
9	Bourglinster	111,4	1,60	5,80
10	Betzdorf	123,6	1,03	3,80
11	Flaxweiler	127,3	2,07	3,10
12	Canach	134,4	1,09	5,80
13	Primerberg	138,9	0,99	4,10
14	Ellange-Gare	150,8	1,05	3,30

## MEDIO FONDO 85 KM



		km Bottom	Lenght km	Avg. %
1	Wintrange	10,1	2,27	5
2	Wormeldange	34,2	5,53	2,80
3	Flaxweiler	56,1	2,07	3,10
4	Canach	63,2	1,09	5,80
5	Primerberg	67,7	0,99	4,10
6	Ellange-Gare	79,6	1,05	3,30

\* km at the top of the climb

85 km



QR CODE

Scann with your  
mobilephone  
and download  
the GPX files  
of the race track

155 km



SCHLECK  
gran fondo

Toujours un oeil  
sur l'immobilier !



atHome.lu

SCHLECK GRAN FONDO 26|05|2018





TIMETABLE 155 KM

KILOMETRES		ITENERAIRE		INFO	HORAIRES	
km +	km -	Route	Localité		40 km/h	22 km/h
155,3	0	N16	Mondorf-les-Bains, <b>Départ fictif</b>		9:30	9:30
153,5	1,8	CR152	Mondorf-les-Bains, <b>Départ réel</b>		9:32	9:34
150,6	4,7	CR 150	Burmerange		9:37	9:42
147,1	8,2		Remerschen		9:42	9:52
145,5	9,8	CR 152	Wintringen		9:44	9:56
141,9	13,4	CR 162	Elvange		9:50	10:06
140,5	14,8	N16	Mondorf-les-Bains		9:52	10:09
136,9	18,4	CR 151/ CR152	Wellenstein		9:57	10:19
134,9	20,4	N 10	Bech-Kleinmacher		10:00	10:25
134,2	21,1		Remich		10:01	10:26
130,1	25,2		Stadtbredimus		10:07	10:38
125,2	30,1		Hettermillen		10:15	10:51
123,5	31,8		Ehnen		10:17	10:55
122,3	33	CR 122	Wormeldange		10:19	10:59
114,5	40,8	CR 143	Oberdonven		10:31	11:20
111,3	44	CR 142	Buchholz		10:36	11:28
107,2	48,1		Potaschberg		10:42	11:39
105,8	49,5	N 1 / N 14	Weckergronn		10:44	11:43
103,8	51,5	N 14	Biwer		10:47	11:49
102,9	52,4		Marxmillen		10:48	11:51
102,1	53,2		Klosmillen		10:49	11:53
101,4	53,9		Boudlerbach		10:50	11:55
99,7	55,6		Weydig		10:53	12:00
97,6	57,7	CR 129	Beidweiler		10:56	12:05
95,3	60		Rippig		11:00	12:12
94,4	60,9		Hemstal		11:01	12:14
93,5	61,8	CR 137	Zittig		11:02	12:16
89,7	65,6		Consdorf		11:08	12:27
84,5	70,8	CR 364	Berdorf		11:16	12:41
79,5	75,8	CR 121 / CR 364 / CR128	Beaufort		11:23	13:24
73,1	82,2	CR 357	Eppeldorf		11:33	13:11
69,1	86,2		Neumühle		11:39	13:22
68	87,3	CR 358	Ermsdorf		11:40	13:25



TIMETABLE 155 KM

KILOMETRES		ITENERAIRE		INFO	HORAIRES	
km +	km -	Route	Localité		40 km/h	22 km/h
66,3	89	N 14A	Medernach		11:43	13:30
63,3	92	CR 119	Aechelbour		11:48	13:38
61,8	93,5	CR 306	Nommern		11:50	4:12
56	99,3	CR 118	Angelsberg		11:58	13:58
54,3	101	CR120	Schoos		12:01	14:02
52,4	102,9		Fischbach		12:04	14:07
49,6	105,7	CR125 / CR 101	Stuppicht		12:08	14:15
48,4	106,9	CR 101	Weyer		12:10	14:18
46,9	108,4	CR 119 / CR 130	Altlinster		12:12	14:22
45,4	109,9	CR 130 / CR 122	Bourglinster		12:14	14:26
42,1	113,2	CR 122	Gonderange		12:19	14:35
38	117,3	CR 129	Rodenburg		12:25	14:46
35,9	119,4	CR 134	Olingen		12:29	14:52
33,6	121,7	CR 145	Betzdorf		12:32	14:58
30,2	125,1	N 1	Banzelt		12:37	15:07
28,9	126,4	CR 122	Flaxweiler		12:39	15:11
24,3	131	CR 145 / CR 134	Beyren		12:46	15:23
21,9	133,4	CR 145 / CR 144	Canach		12:50	15:30
17,5	137,8	CR 145	Greiveldange		12:56	15:42
15,1	140,2	CR 146 / N 10 / CR 149	Stadtbredimus		13:00	15:48
11,1	144,2	N 2	Bous		13:06	15:59
10,6	144,7	N 2 / CR 149	Erpeldange		13:07	16:00
5,7	149,6	CR 162	Ellange		13:14	16:13
4,5	150,8		Breim		13:16	16:17
3	152,3	CR 155 / N 16	Altwies		13:18	16:21
0	155,3	N 16	Mondorf-les-Bains		13:22	16:29







TIMETABLE 85 KM

KILOMETRES		ITENERAIRE		INFO	HORAIRES	
km +	km -	Route	Localité		40 km/h	22 km/h
84	0	N16	Mondorf-les-Bains, <b>Départ fictif</b>		10:00	10:00
82,2	1,8	CR152	Mondorf-les-Bains, <b>Départ réel</b>		10:02	10:04
79,3	4,7	CR 150	Burmerange		10/07	10:12
75,8	8,2		Remerschen		10/12	10:22
74,2	9,8	CE 152	Wintringen		10/14	10:26
70,6	13,4	CR 162	Elvange		10/20	10:36
69,2	14,8	N16	Mondorf-les-Bains		10/22	10:39
65,6	18,4	CR 151/ CR152	Wellenstein		10:27	10:49
63,6	20,4	N 10	Bech-Kleinmacher		10:30	10:55
62,9	21,1		Remich		10:31	10:56
58,8	25,2		Stadtbredimus		10:37	11:08
53,9	30,1		Hettermillen		10:45	11:21
52,2	31,8		Ehnen		10:47	11:25
51	33	CR 122	Wormeldange		10:49	11:29
43,2	40,8	CR 143	Oberdonven		11:01	11:50
40	44	CR 142	Buchholz		11:06	11:58
35,9	48,1		Potaschberg		11:12	12:09
34,5	49,5	N 1 / N 14	Weckergronn		11:14	12:13
31,5	52,5	N1	Berg		11:18	12:21
29,8	54,2		Banzelt		11:21	12:26
28,8	55,2	CR 122	Flaxweiler		11:22	12:29
24,3	59,7	CR 145 / CR 134	Beyren		11:29	12:41
21,9	62,1	CR 145 / CR 144	Canach		11:33	12:47
17,4	66,6	CR 145	Greiveldange		11:39	12:59
15,1	68,9	CR 146 / N 10 / CR 149	Stadtbredimus		11:43	13:06
11,1	72,9	N 2	Bous		11:49	13:16
10,6	73,4	N 2 / CR 149	Erpeldange		11:50	13:18
5,7	78,3	CR 162	Ellange		11:57	13:31
4,5	79,5		Breim		11:59	13:34
3	81	CR 155 / N 16	Altwies		12:01	13:38
0	84	N 16	Mondorf-les-Bains		12:06	13:46



EQUITIES | FIXED INCOME | SRI | ABSOLUTE PERFORMANCE | ASSET ALLOCATION

TO ACHIEVE SUCCESS,  
ONE NEEDS CONVICTION.

CANDRIAM, INVEST WITH CONVICTION AND RESPONSIBILITY



DanBECK  
Immobilière

30, rue des Romains  
L-8041 Strassen  
T 26 38 33 33 - 1

www.beckimmo.lu

LE MEILLEUR PLAN  
POUR TROUVER  
VOTRE HABITATION.



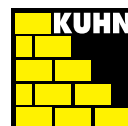
## Diamond



## Gold



## Silver



## Bronze



## Media Partner



## Technical Partner



## Host City



Gemeng Munneref

## Volunteers

**To our champions on the sidelines, thank you!**  
We appreciate all of our Schleck Gran Fondo volunteers  
that made today possible!